



From AV Switching to AI-Driven Workplace Outcomes



Gus Marcondes

Head of NETGEAR Academy

NETGEAR AV



Andrew Gross

SVP of Sales

XYTE AI

Standards-based infrastructure is the enabler

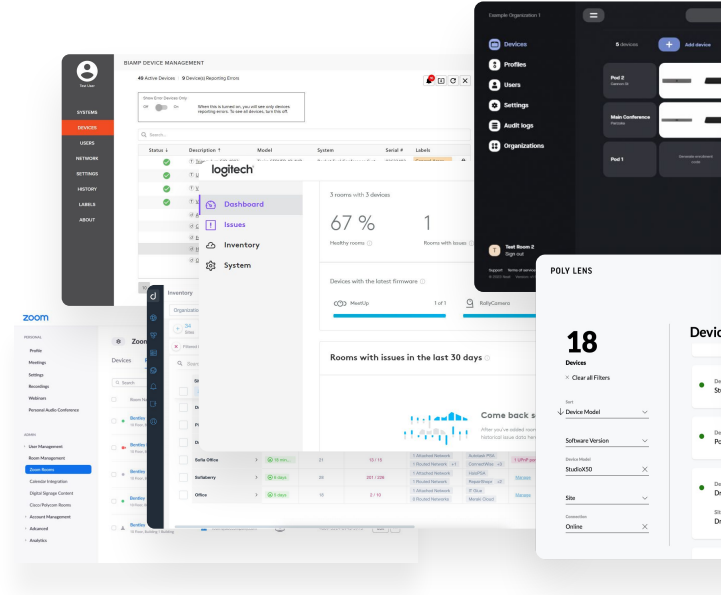
- Purpose-built for AV-over-IP switching: designed for the bandwidth, latency, and reliability demands of modern AV
- Open architecture with no vendor lock-in
- Compatible across leading protocols and brands
- Foundation for scalable cloud management



THE MANAGEMENT CHALLENGE

More devices, more sites, same team

- Every AV install is inherently multi-vendor
- No single view across sites and systems
- Reactive troubleshooting is costly and slow
- Firmware, licenses, and warranties hard to track
- Security and compliance gaps are difficult to close





The intelligence layer on top of your infrastructure

- Single pane of glass: every device, room and location, regardless of brand
- Monitor, automate, and manage from anywhere
- Device data turned into insights and outcomes
- AI at scale; humans on critical decisions
- From reactive firefighting to proactive operations



Why open architecture matters (and why we're involved in OpenAV Cloud)



OpenAV Cloud

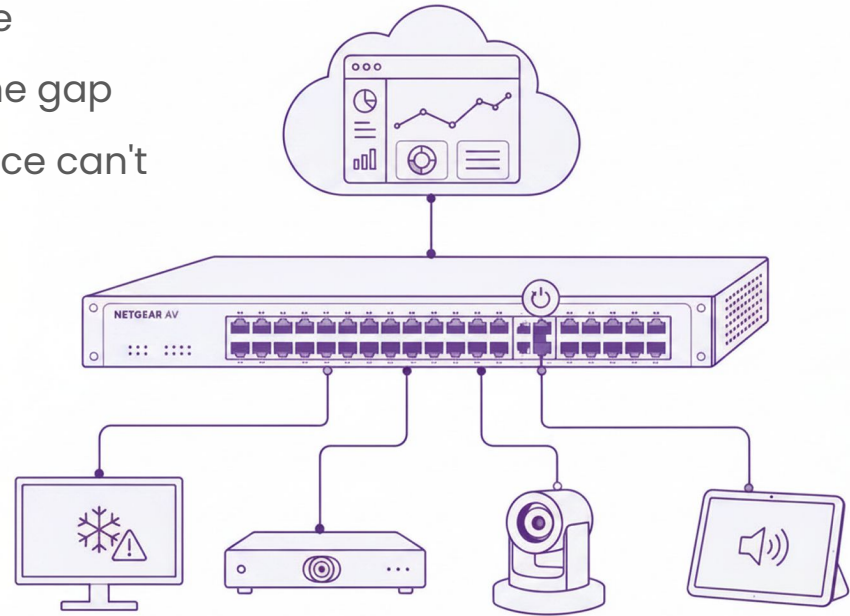
Driving open collaboration, standardization, and interoperability
for the integrated AV ecosystem through open APIs

- Vendor-neutral flexibility
- Easier integrations & scalability
- Faster support & troubleshooting
- Future proof your AV/IT investments
- Backed by industry leaders

CONTROL WITH CLOUD

No cloud support on the device? No problem.

- Majority of endpoints are not cloud-native
- NETGEAR AV switch port control bridges the gap
 - Acts at the infrastructure level if device can't
- Remote PoE reboot and recovery;
no truck roll needed



AI-READY OPERATIONS & WHAT'S NEXT

Putting the data to work

- AI agents that act autonomously, within guardrails you define
 - Humans keep all critical decisions
 - Designed with AI ethics at the core
- Centralized data that drives smarter, faster resolutions
- Energy savings identified and acted on automatically

The image displays five overlapping screenshots of the XYTE AI agent interface, illustrating its autonomous operations and data-driven insights.

- Set morning routine:** The agent responds to a user's request to set a morning routine at 7AM. It provides a configuration for a "Morning Routine" with a schedule of 7:00 AM, Mon-Fri, and specific settings for Display (Set input HDMI1), Speaker (Set volume 50), and Microphone (Set gain 30). It asks for approval to apply this routine to small meeting rooms.
- Accelerate ticket resolution:** The agent identifies a high device temperature on Display-002 and provides context from device data, including overheating events and ventilation recommendations. It offers suggested responses to accelerate resolution, such as "Power cycle Display-002" (85% success rate), "Create maintenance ticket", and "Enable auto-shutdown at 6PM".
- Open incidents:** The agent lists devices with open incidents in the past 24 hours, including Yealink T58a, Avccor AVH-8620, Apple Zoom Room Mac Mini, and Legra Teams Room PDU.
- Room occupancy insights:** The agent provides insights on room occupancy for the last 30 days, showing a bar chart of occupancy percentages ranging from 80% to 95%.
- AI Suggestions:** The agent provides suggestions for resolving incidents, such as "List devices with open incident in the past 24 hrs" and "List closed incidents that were shorter than 5 minutes".



Live Demo

FROM MONITORING TO MANAGED SERVICES

Stop selling projects. Start selling outcomes.

- Uptime, energy use, device health, and support activity = monetizable data points
- Build tiers: from basic monitoring to proactive management to AV-as-a-Service
- ROI typically realized in 12 to 24 months
- Partners gain recurring income, customers gain accountability

“Near the end of the RFP, we were able to pivot from an AV integrator pitch to an AV managed service provider pitch. With Xyte, we could show what proactive support looks like and honestly tell them, ‘If it breaks, **we’ll call you.**’



Bryce Etheridge,
Sphere AV

Meet us at InfoComm 2026

Las Vegas, June 17-19



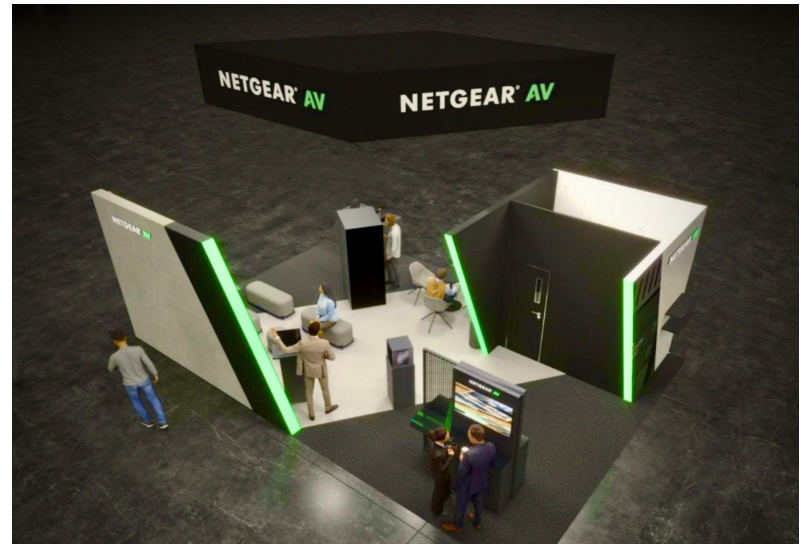
Xyte: Booth C10307



Schedule a meeting



NETGEAR AV: Booth N7011



Get Certified on the NETGEAR Academy!

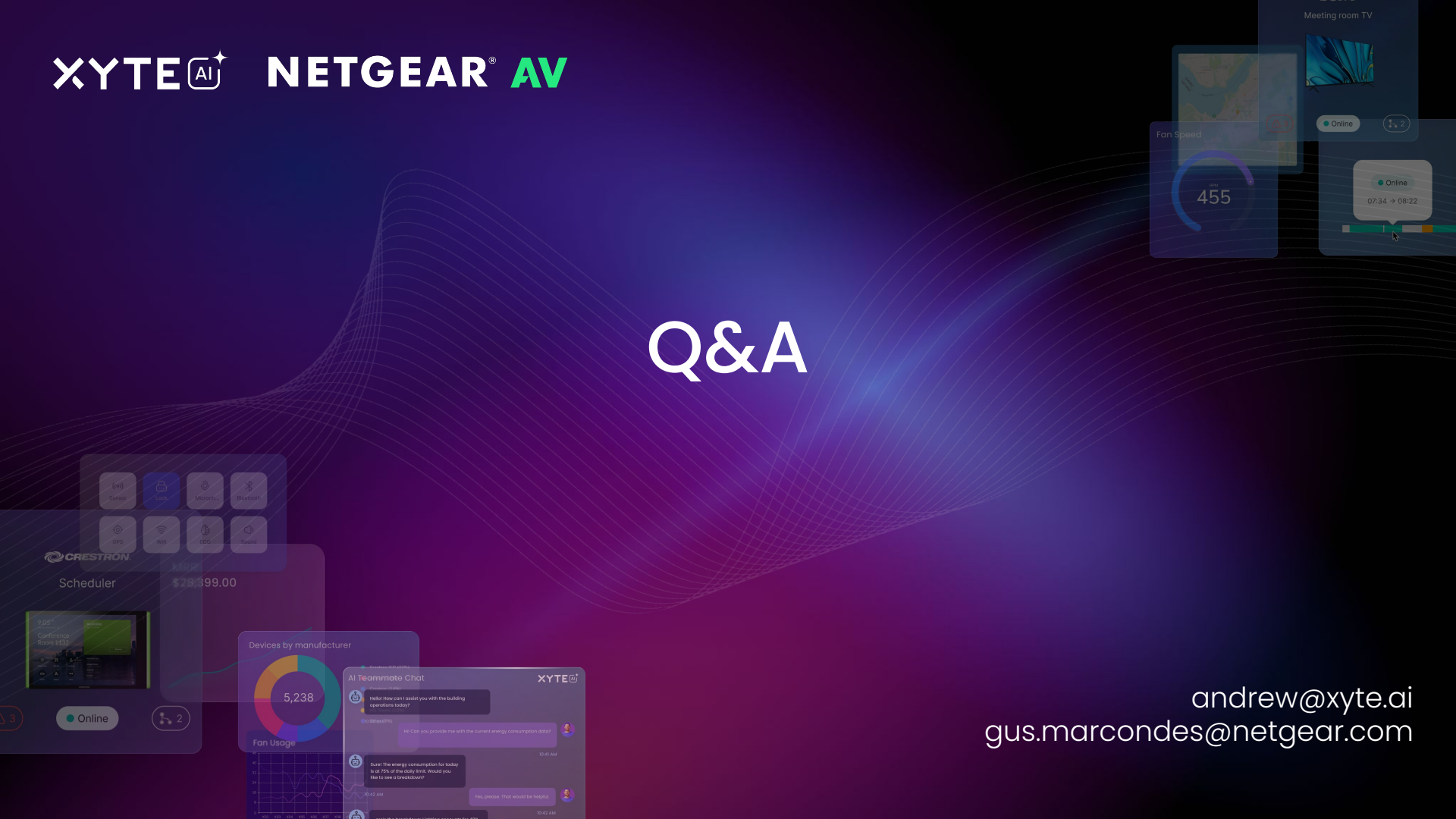


XYTE AI

NETGEAR AV

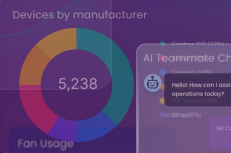
Q&A

andrew@xyte.ai
gus.marcondes@netgear.com



CRESTRON
Scheduler
\$28,399.00

- FTP
- Link
- Metadata
- Bluetooth
- WiFi
- IPSC
- Serial



AI Teammate Chat

XYTE AI

Hi! How can I assist you with the building operations today?

Can you provide me with the current energy consumption data?

Sure! The energy consumption for today is at 75% of the daily limit. Would you like to see a breakdown?

Yes, please. That would be helpful.

Meeting room TV

Online

07:34 -> 08:22

Fan Speed

455